



ANGELO STATE UNIVERSITY

CAMPUS TOUR

Welcome to Angelo State University, where native live oak and pecan trees shade the way and where your potential for success is as limitless as the West Texas sky. Use this walking tour as your guide and enjoy your visit!



START >> 1

Centennial Village

Begin your tour at the courtyard of Centennial Village, a 526-bed residence hall that opened in the fall of 2008 and anchors the west end of campus. The \$28 million facility was recognized for design excellence in the 2009 fall issue of *American School and University Magazine*. The Time Capsule in front of Centennial will be opened in 2053 on the 125th anniversary of ASU's founding. ■ *Next, continue east and you will pass another campus living facility, Carr Hall.*



2

Hardeman Student Services Center

The Hardeman Student Services Center will be the first place you visit if you are interested in attending Angelo State. Here you will find the Office of Admissions, Financial Aid and the Registrar. Additionally, the building houses the offices of the Center for Security Studies. Originally, this building housed science and agriculture classes.

Mayer Administration Building

Built when the college moved from downtown to its current site, this building was dedicated in 1948 and was known as the Main Building. Sixty years later it was renamed the Mayer Administration Building in honor of San Angelo College patron Solomon "Sol" Mayer. The Mayer name has been a fixture on campus since 1950, when Mayer Hall was authorized as a new dormitory.



Memorial Oak Grove

This monument on the northeast corner of the Mayer Administration Building is dedicated to the 30 San Angelo College students who died during World War

II. The monument is shaded by live oak trees planted in their honor. Each name represents a life cut short, some in training accidents as close as San Marcos and Seguin, and others on battlefields whose names resonate through American history—Guadalcanal, Normandy and Iwo Jima. You can take a slight detour to visit the site up close or view it from a distance.

CAMPUS TOUR 2

Home of Champions Monument

As you walk near the Hardeman Center and the Administration Building, this brick monument marks the spot of the Cow Palace, the nickname of the original gymnasium on the ASU campus. The gym was built from a surplus hangar from a local Army airfield after World War II. Even though the basketball court was 8 feet shorter than a regulation floor, it didn't stop the Rams basketball team from winning the 1957 National Junior College Athletic Association Championship, the first of the institution's four national championships.



University Clinic

As you continue east, you will see the University Clinic, where ASU students receive health and counseling services.



University Mall

This is the pedestrian spine that runs through the Angelo State University campus, linking Centennial Village on the west and the Massie Residence Halls on the east edge of the campus proper.

"The Quest"

This sculpture near Johnson Street was created by San Angelo College graduate and renowned artist Lincoln Fox and is dedicated to the memory of Dr. Lloyd D. Vincent, Angelo State University's longest-serving president. He died attending a board of regents meeting in 1994 after 27 years on the job. The 20-foot-tall monument features an eagle with a 9-foot wingspan. The artwork symbolizes the ability of education to free all from the shackles of ignorance and to liberate imagination.



* FOLD HERE TO MAKE ME EASIER TO CARRY *

DID YOU KNOW?

Intramural sports are huge at ASU. In addition to being ranked by *Princeton Review* as having the 18th most active intramural program in the nation, ASU's teams are also regular competitors in the American Collegiate Intramural Sports National Championships.



3

Center for Human Performance

In addition to being the office for kinesiology, the Center for Human Performance/Student Recreation Center, or CHP (pronounced "chip"), is the center of student intramural activities and physical recreation. The new student rec center offers a climbing wall, jogging track and exercise facilities to supplement the gymnasium and swimming pool in the building.



4

Vincent Nursing-Physical Science Building

The Vincent Nursing-Physical Science Building—also named for President Vincent and his wife, Johnell—houses nursing, physics, agriculture and physical therapy. The building is also home to the Nursing Simulation Lab as well as ASU's Global Immersion Center, which boasts the multiple capabilities of a planetarium and an IMAX theater.



5

Roscoe's Den, The Super Slab and Food Service Center

Roscoe's Den offers quick meals and convenience store items and is open for lunch, dinner and late-night snacking. The ASU Super Slab, adjacent to Roscoe's Den, can seat 75 people at both indoor and outdoor tables and is also a popular spot for outdoor movie showings. Next to Roscoe's Den is the Food Service Center, the main eatery for on-campus residents. Open for breakfast, lunch and dinner

seven days a week during the academic semesters, the Food Service Center offers a range of nutritious options at every meal.



Campus Green

Just east of the Food Service Center, the University Mall opens up onto the Campus Green, a popular spot for students and campus visitors to relax and enjoy jogging trails and gathering areas. In the spring,

you can see beautiful wildflowers that bloom along some of the trails. The 10-story University Hall, known for many years as the Women's High Rise, once stood here. In October of 2009, the one-time residence hall was imploded. Gravity and 140 pounds of strategically placed dynamite brought down the building in 18 seconds. It was the most spectacular event in the history of Angelo State and a YouTube sensation for weeks afterward.



Plaza Verde

Plaza Verde residence hall was completed in early 2012 and is considered one of the main campus facilities for first-year students. In addition to four buildings that each house about 100 students, Plaza Verde also contains a two-story clubhouse with the hall's main office, pool tables, a large-screen TV and meeting and group study space.



6

Massie Residence Halls

As you reach the east end of the University Mall, the Massie residence halls are straight ahead. The namesakes of the buildings, Robert and Mary Massie, made their living in ranching and business and were two of the earliest supporters of San Angelo College. Completed in the early 1980s, the residence halls featured construction that was unconventional for the time. Each building was created out of 100 separate modules that came complete with wiring and plumbing and were erected in only six days after the components arrived. Each module weighed more than 40 tons and was hoisted into place with cranes.

Texan Hall

As you turn south, you will see Texan Hall, which opened in 2003 and was the first new residential facility since the completion of the Massies. After much student discussion and

input, Texan Hall was built to be a model campus housing unit and even boasts a 75-seat mini theater. The building houses 496 students and 12 resident assistants.



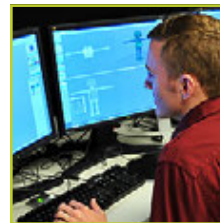
Junell Center Stephens Arena

Continuing to the south you will see the Junell Center/Stephens Arena, home to Rams and Rabelles athletics and the

ASU Athletic Hall of Honor, where ASU's national championship trophies are on display. In the fountain in front of the Junell Center you will find the life-size statues of a Rambouillet ram and ewe. The entrance is dominated by a 110-foot, 8,000-pound flagpole flying the Stars and Stripes. Stephens Arena also hosts numerous community performances and campus activities.

Rassman Building

As you continue through the Campus Green, you will head toward the Rassman Building, home to several academic areas, including the College of Business, aerospace studies/ROTC, and political science and criminal justice as well as the offices for Information Technology.



Mathematics-Computer Science Building

Heading west, the Mathematics-Computer Science Building houses the academic department in its name as well as the Entertainment Computing Lab and the State of Texas Data Center.

* FOLD HERE TO MAKE ME EASIER TO CARRY *

DID YOU KNOW?

ASU's computer game development program was named one of the "Top 50 Undergraduate Game Design Programs" in the U.S. by *Princeton Review* and *GamePro* magazine.

CAMPUS TOUR 5

DID YOU KNOW?

Dominic is a purebred Rambouillet ram who stands as a proud symbol of ASU and the institution's ties to the region and its people. ASU's Agriculture Department maintains a herd of Rambouillet sheep on its ranchlands just outside of town, and Dominic is selected from that herd based on his demeanor and the sweep of his horns. Today, Dominic is a regular fixture at ASU activities, ranging from the Official Ring Ceremony to outdoor athletic events.



7

Science Buildings

After you cross Johnson Street, take the diagonal sidewalk toward the Cavness Science Building. Round the corner and follow the path into the courtyard of the Science III Building. Both of these buildings are devoted to the sciences. The Cavness Building was named for Dr. Raymond M. Cavness, who was president from 1954–67 when the institution transitioned from a local community college to a four-year, state-supported university. The Cavness Building is also home to the Angelo State Natural History Collections, which contain tens of thousands of specimens of flora and fauna. Continue following the path straight ahead.



Academic Building

ASU students spend a lot of time in the Academic Building as it is home to several departments whose offerings contribute to the university's academic core. These departments include English and modern languages, and psychology, sociology and social work.

World Famous Gum Tree

This mesquite tree represents one of the oddest campus traditions anywhere in the world. Legend has it that for good luck an ASU student pressed the first wad of gum onto the tree back in the 1960s. After his wish was granted, other students followed suit. As a result of drought conditions in the summer of 2011, the gum tree uprooted and toppled over under the weight of the gum. Maintenance crews secured the stump in its original location, and the power of the tree is once again at work—it has shown signs of new growth.



Carr Education-Fine Arts Building

Named for major ASU benefactors Robert and Nona Carr, this facility houses the College of Education as well as the offices for music, art and theatre. The Eldon Black Recital Hall and the Modular Theatre are popular venues for the performing arts. The building namesakes made the bequests that created the Carr Scholarship Program at Angelo State University. Today the Carr Foundation has an endowment of more than \$96 million to provide scholarships for ASU students.

CAMPUS TOUR 6



8

Porter Henderson Library

Appropriately, the Porter Henderson Library was the first building dedicated on campus after Angelo State College became Angelo State University. Today, the Porter Henderson Library is the academic heart of the university. The library features an Information Commons designed for the contemporary student with a variety of traditional and electronic resources available on three floors, including a basement. The top floor is home to ASU's communication and mass media programs as well as the Honors Program, the Tutoring Center and Center for Academic Excellence.



END>>

9

Houston Harte University Center

No place is better for concluding your tour than the Houston Harte University Center. Stop in and grab a soft drink or visit the ASU Bookstore for some Rams and Rambelles souvenirs to commemorate your campus visit. The second floor houses the West Texas Collection, a regional historical archive preserving materials related to the economic, social and cultural development of the region. The collection is appropriately housed in a building named for Houston Harte, the long-time publisher of the *San Angelo Standard-Times* and confidant of President Lyndon Baines Johnson.

* FOLD HERE TO MAKE ME EASIER TO CARRY *



DID YOU KNOW?

ASU's spirit hand sign is known as the Ram's Head. The sign is made by bending the middle and ring fingers down over the palm and covering them with the thumb. The extended index and pinky fingers are then bent halfway to represent the curve of the horns. You will see the sign used at various times during athletic events and always during the playing of the Alma Mater in acknowledgement of the mighty and majestic Ram.



From here,
it's possible.

LEGEND | **1** tour stops | **M** monuments | **—** tour route