

SUPPLEMENTAL INSTRUCTION

Angelo State University

What are SI sessions all about?

You may be wondering what really goes on in an SI session. To set the record straight SI is not...

- a repeat of the lecture.
- notes missed in class.
- extra credit.
- just for those who are struggling.

But, SI is...

- peer-led.
- free group study.
- open to everyone.

Each session is distinct to the SI Leader and the class it supports. Each SI Leader looks for unique and creative ways to help the students understand the material at hand.

In Amanda's BIO 2423: Anatomy sessions she always splits her time between

classroom and lab, providing quizzes and discussion on lecture material and re-examining the lab work.

Dace describes his ENG 1302 SI sessions as "grammatical." His sessions are informally structured so that he can help students with individual writing concerns.

MATH 1302: College Algebra sessions with Apurvi are "challenging," but she likes the fact that her students feel comfortable with her to make mistakes in SI and not in the classroom.

In Beatrice's MATH 1302 sessions she offers a mock exam before each test and short worksheets in between.

BIO 1411 sessions with Ben are thought provoking. With his open-minded

questions, Ben helps the students learn to help themselves.

A student in Jairon's BIO 2424: Physiology session said, *Wow! I went to your SI session and then applied the information we discussed and got an 'A' on my quiz.*

Vanessa combines mock exams, quizzes and handouts in her MATH 1302 sessions to offer students extra practice. She also has the students write important formulas on note cards.

While SI sessions are different because they're tailored to the subject matter, they are also similar in that they provide additional study time that focuses on key course concepts.



Important Date:

April 13

2nd Peer Observation Due



SI Staff

Dr. Susan L. Neste

Executive Director
Center for Academic Excellence
susan.neste@angelo.edu

Sara Weertz

Director
Supplemental Instruction
sara.weertz@angelo.edu

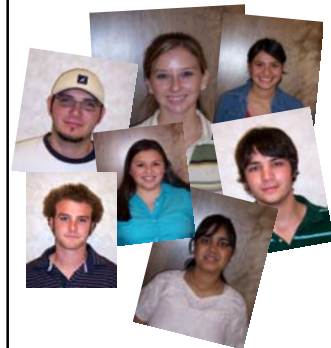
Ashley Turner

Asst. SI Coordinator
Editor
aturner1@angelo.edu

Office of Supplemental Instruction

Center for Academic Excellence
Library A312
(325) 942-2710
siprogram@angelo.edu

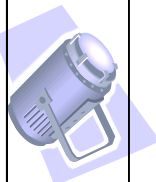
SPRING 2006 SI LEADERS





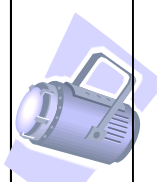
Apurvi Patel
College Algebra

Spotlight
on
SI Leaders



Ben Froggé
Biology

Spotlight
on
SI Leaders



Vanessa Lujan
College Algebra

Apurvi Patel is in her second semester as an SI Leader. She is a senior Biology major with a minor in Chemistry, Apurvi is active in Tri-Beta Biological Honor Society, Epsilon Sigma Alpha a community service sorority, and Alpha Chi honor society. Her favorite classes at ASU have been Histology and Pathogenic Microbiology. After graduation Apurvi would like to attend medical school. She has not decided upon her specialty. Apurvi wanted to do SI because she needed a job and she has always enjoyed tutoring and explaining to students subject matter in the way she sees it.

Ben Froggé is in his very first semester as an SI Leader. He is a junior Biology major with a Chemistry minor. Ben is active in Tri-Beta Biological Honor Society and is involved with the Angelo State Natural History Museum. His favorite class at ASU has been Mammalogy. After graduation next year Ben plans to attend graduate school here at Angelo State. He would like to be a college professor. Ben went to Australia to study the wildlife and habitat there. Ben wanted to do SI because he is interested in teaching at the collegiate level and SI is great experience.

Vanessa Lujan is in her second semester as an SI Leader. She is a junior Pre-Pharmacy major. Vanessa is a member of the Angellettes dance team. Her favorite class at ASU has been Microbiology. After graduation Vanessa would like to attend pharmacy school. Vanessa describes herself as a very outgoing person who is full of surprise. She learned to play the guitar on her own. Vanessa decided to be an SI Leader because she felt that it would be a great opportunity to be of service to other students. She also thought it would help in keeping her algebra skills fresh.

SI Session Schedule: Spring 2006

MATH 1302.030
College Algebra
Beatrice Flores
bflores@angelo.edu

T 2-3 p.m. MCS 116
W 2-3 p.m. MCS 116
R 6-7 p.m. MCS 116

MATH 1302.060
College Algebra
Vanessa Lujan
vlujan@angelo.edu

T 1-1:50 p.m. MCS 119
W 2-3 p.m. MCS 214
R 7-8 p.m. MCS 215

MATH 1302.080
College Algebra

Apurvi Patel
apurvipatel@angelo.edu

M 7-8 p.m. MCS 216
W 10-10:50 a.m. RAS 101
R 2-3 p.m. MCS 216

BIO 2424
Human Physiology
Jairon Johnson
jjohnson13@angelo.edu

M 5-6 p.m. CAV 123
T 2-3 p.m. CAV 119
W 8-9 p.m. CAV 119

BIO 2423
Human Anatomy
Amanda Castillo
acastillo@angelo.edu

M 2-3 p.m. CAV 119
T 5-6 p.m. CAV 119
R 7-8 p.m. CAV 019

BIO 1411
Man and the Environment
Ben Froggé
bfrogge@angleo.edu

T 6-7 p.m. CAV 019
W 1-2 p.m. CAV 019
F 10-11a.m. CAV 123

ENG 1302
Writing Across the Curriculum
Dace Mahanay
dmahanay@angelo.edu

T 5-6 p.m. A103
W 10-11 a.m. A007
F 12-1 p.m. A027