

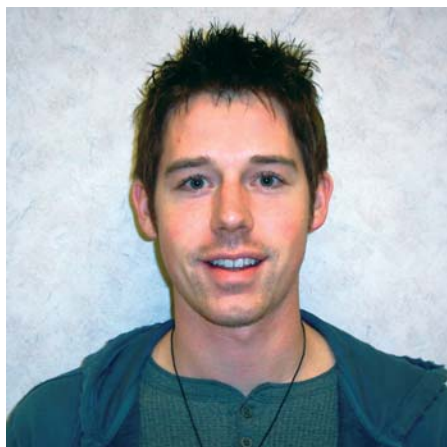


SUPPLEMENTAL INSTRUCTION news

Issue 13, March 2008

Touching Tomorrow

Spotlight on SI Leaders



Matt Jackson
Human Anatomy

This is Matt Jackson's first and only semester as an SI Leader, supporting BIO 2423: Human Anatomy with Dr. Russell Wilke. As a senior biology major, Matt chose to do SI to "keep anatomy fresh for medical school while helping friends with a subject" he loves. Matt is also involved in the Honors Program, Tri-Beta, Alpha Chi, and intramural sports. If you don't know Matt from one of those areas, you've most likely read about his award-winning research with Mexican free-tailed bats. After graduation this May, Matt will attend medical school in San Antonio.



Erica Schalek
Human Anatomy

Erica Schalek is a sophomore biology major with a chemistry minor. This is Erica's first semester as an SI Leader, teaming up with Matt Jackson to support BIO 2423: Human Anatomy. Erica handles the anatomy labs while Matt deals with the lectures. All anatomy students—no matter which lab they are enrolled in—are invited and encouraged to attend Erica's lab SI sessions. Erica's off-campus interests include work with Meals for the Elderly, Big Brothers Big Sisters, and the Boys & Girls Club. Erica's plans for the future include medical school in Texas; she hopes to become an orthopedist.



Anna Romero
Human Physiology

This is Anna Romero's second and last semester as an SI Leader for BIO 2424: Human Physiology, both lecture and lab, with instructor Michael Griffin. Students from all three physiology lectures as well as the multiple labs are encouraged to attend Anna's SI sessions. Anna has a bachelor's degree in biology and is a member of the Student Nurses' Association. In fall 2007, she was an SI Leader for anatomy and before that she was a tutor for the Biology Department. This May, Anna will graduate with a nursing degree. She looks forward to working in medical surgery.

Important SI Dates

MARCH 24 – 28:

2nd SI Leader Portfolio Review

MARCH 28:

Online SI Leader Staff Meeting (topic: Learning Styles)

APRIL 14 – 18:

Student SI Evaluations (in class)

MAY 2:

Spring 2008 SI sessions end with last day of classes

To:

Professional SI Observers

Students attending Supplemental Instruction (SI) might notice an unfamiliar face walk into the classroom and quietly sit in the back. This unfamiliar face is one of the Professional SI Observers, who assess and evaluate the SI Leaders' performances. In addition, the SI observers offer encouraging and constructive feedback to help the SI Leaders improve their academic assistance.

SI observers this semester are Sara Weertz, director of SI; Mary Vesper, Center for Academic Excellence academic advisor; and Katie Plum, coordinator of sponsored projects for the College of Graduate Studies and graduate student in Student Development & Leadership in Higher Education.

While they view the sessions, the SI observers rate the SI Leaders in several areas using a scale of 1 to 5 (1 being "below expectations" and 5 being "exceeds expectations"). The observers are looking to see how well the SI Leaders facilitate group discussions and whether they engage all of the students in the conversation or only a select few. SI observers also evaluate session preparation and integration of study skills strategies, as well as general course content.

Observers meet semi-weekly to review and discuss their observations in an effort to help SI Leaders improve their sessions and progress toward their goals. Thus far, the observers have been impressed with the quality of work of all the SI Leaders.

When the observers make a suggestion (such as to direct questions to specific students rather than the group or to incorporate test-taking strategies into the SI sessions), the SI Leaders immediately make adjustments.

More importantly, the SI Leaders have developed new methods for reviewing course content. Two of the newest activities, "Chit Chat with Chelsea" and "Popcom," were designed by SI Leaders Chelsea Preas (HIST 1302 with Dr. Hindman) and Anna Romero (BIO 2424 with Mr. Griffin). What do these new activities involve? You'll just have to visit one of their SI sessions to find out.

Supplemental Instruction Staff

Dr. Susan L. Neste
Executive Director
Center for Academic Excellence
susan.neste@angelo.edu

Sara Weertz
Director
Supplemental Instruction
sara.weertz@angelo.edu

Office of Supplemental Instruction
Center for Academic Excellence
Library A306
(325) 942-2710 X-387
www.angelo.edu/dept/si

Katie Plum
Contributing Editor
Professional SI Observer
College of Graduate Studies
katie.plum@angelo.edu

Mary Vesper
Professional SI Observer
Center for Academic Excellence
mary.vesper@angelo.edu

SI Session Schedule: Spring 2008*

BIO 1411 - Man and the Environment

Jason Bodiford
jbodiford@angelo.edu
M 3:00 – 4:00 p.m. in CAV 219
T 12:30 – 1:30 p.m. in CAV 219
W 4:30 – 5:30 p.m. in CAV 119

HIST 1302 - 1865 to Present

Chelsea Preas
cpreas@angelo.edu
W 2:00 – 3:00 p.m. in A 239
R 2:30 – 3:45 p.m. in A 235
F 3:00 – 4:00 p.m. in A 235

MATH 1302 - College Algebra

Anna Ermakova
aermakova@angelo.edu
T 7:00 – 8:30 p.m. in MCS 112
R 4:00 – 5:30 p.m. in MCS 112
F 2:30 – 4:00 p.m. in MCS 112

GOVT 2302 - Federal & State Government

Heather Guthrie
hguthrie@angelo.edu
M 8:00 – 9:00 a.m. in RAS 100
T 2:00 – 3:00 p.m. in RAS 103
W 3:00 – 4:00 p.m. in RAS 103

BIO 2424 - Human Physiology (LAB & LECTURE)

Anna Romero
aromero1@angelo.edu
M 12:30 – 1:30 p.m. in SIII 107
W 2:30 – 3:30 p.m. in SIII 109
F 12:00 noon – 1:00 p.m. in SIII 107
M and F are Lab Meltdown Days

BIO 2423 - Human Anatomy (LAB)

Erica Schalek
eschalek@angelo.edu
M 4:00 – 5:00 p.m. in CAV 131
DT 1:00 – 2:00 p.m. in CAV 131
W 5:00 – 6:00 p.m. in CAV 131
F 2:00 – 3:00 p.m. in CAV 131
Fallback location during Practicals weeks: CAV 211

BIO 2423 - Human Anatomy (LECTURE)

Matt Jackson
mjackson7@angelo.edu
M 12:00 noon – 1:00 p.m. in CAV 125
M 2:00 – 3:00 p.m. in CAV 125
T 4:30 – 5:30 p.m. in CAV 123
W 1:00 – 2:00 p.m. in CAV 111
F 9:00 – 10:00 a.m. in CAV 119

CHEM 1412 - General Chemistry

Katy Kirchhoff
kkirchhoff@angelo.edu
M 7:00 – 8:00 p.m. in CAV 219
T 2:00 – 3:00 p.m. in CAV 219
R 11:00 a.m. – 12:00 noon in CAV 219

*** Be sure to check with individual SI Leaders for information regarding special SI sessions offered throughout the term.**