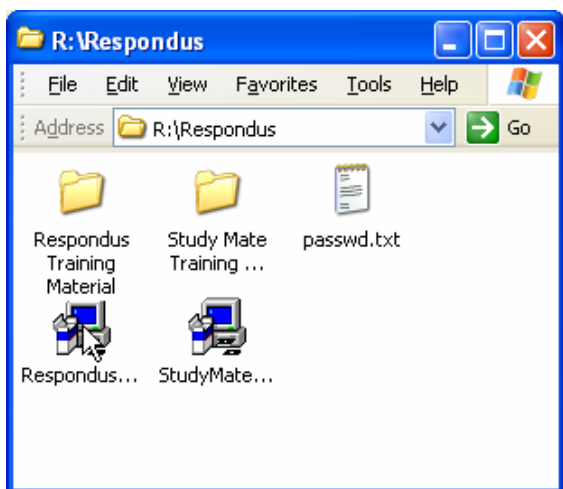


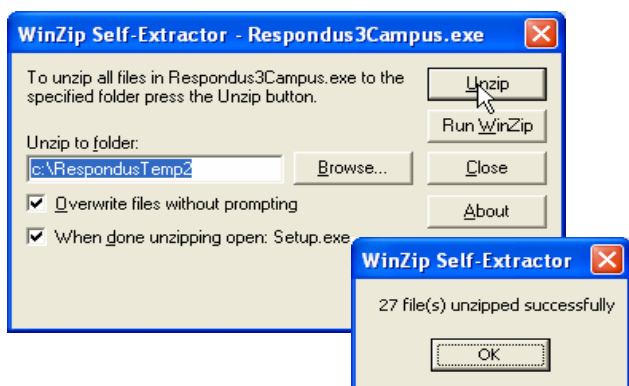
Respondus Installation

Step 1: Locate Respondus 3.5 Campus-Wide

- Click Start and Select My Computer.
- Double-click the Everyone on 'filesolve2' (R:) colon item.
- Scroll down to the Respondus folder and double click the folder icon.
- Double click the Respondus3Campus.exe icon to start the installation.
- Click OK.



- Click the Unzip button to extract all of the installation files to your local drive.
- Once the winzip self-extractor finishes, click OK.



Step 2: Complete the installation program

- Click Next to begin the wizard.
- Click Yes to accept the license agreement.
- Click Next to install Respondus in the default folder.
- Click Next again to accept the default projects folder.
- If you think you might use it, click Yes to install the equation editor.
- If you installed the equation editor, uncheck the View read me check box and click OK when the installation complete dialog box appears.
- Click Finish to exit the setup program.

