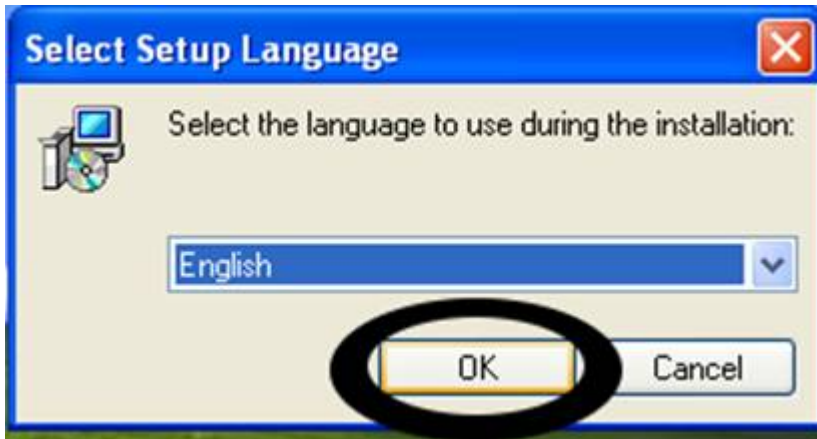


Spybot Installation Instructions

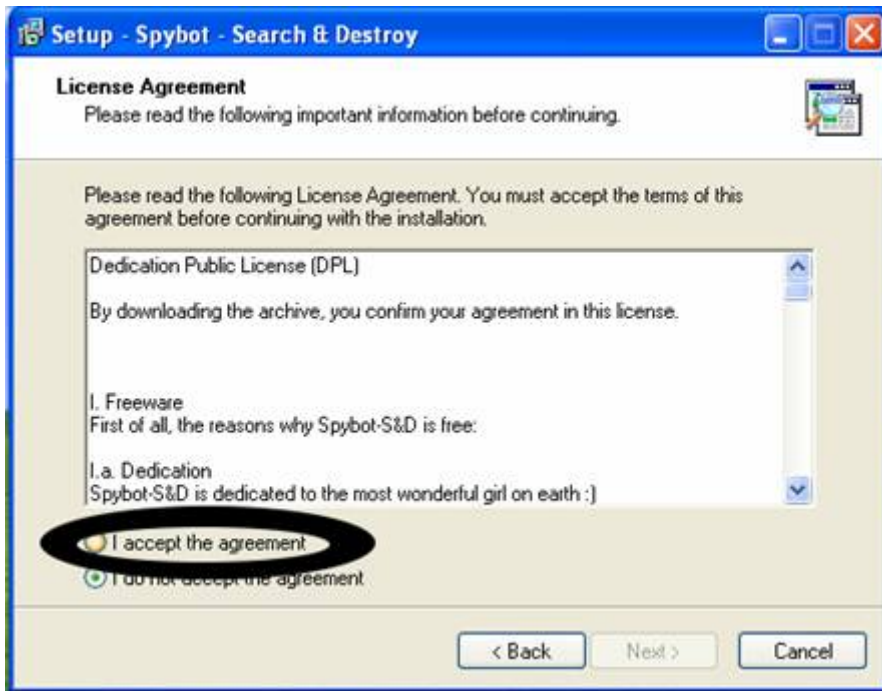
Double-click the icon named “aawsepersonal.exe” on your CD-Rom.



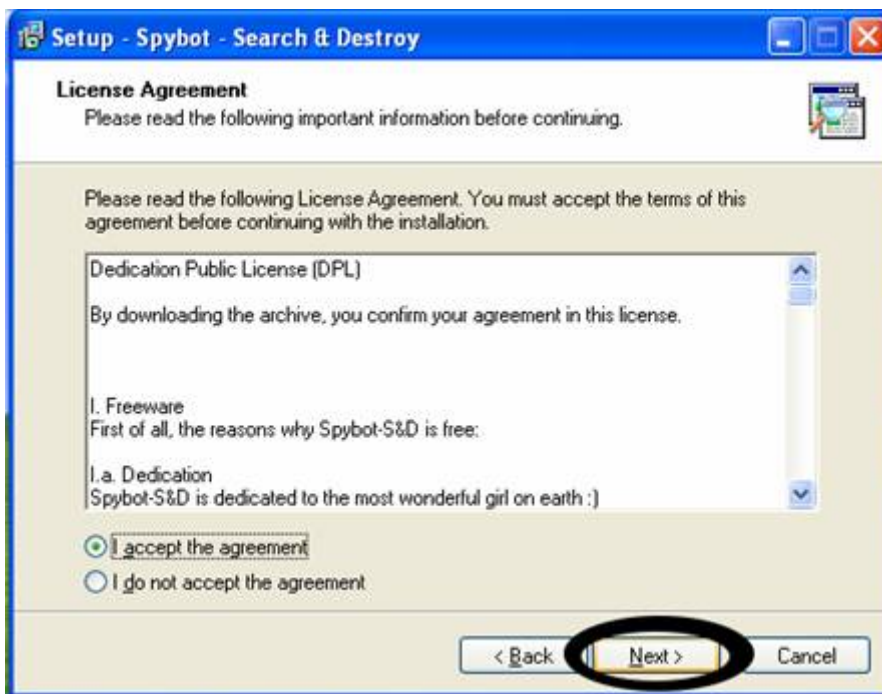
Select a language you want to use then click “OK”



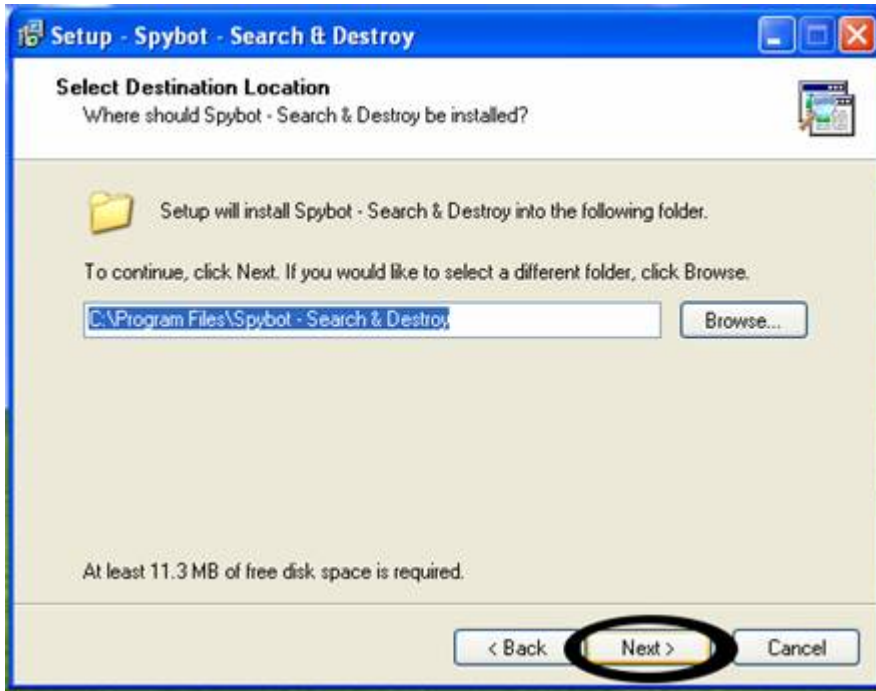
Click “Next” to continue.



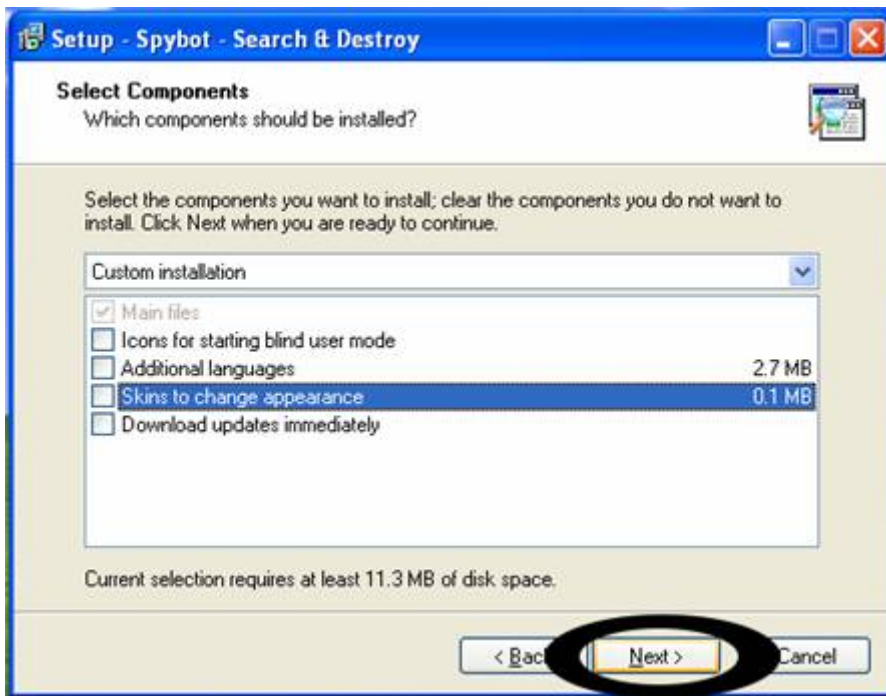
To accept the agreement, click on “I accept the agreement”.



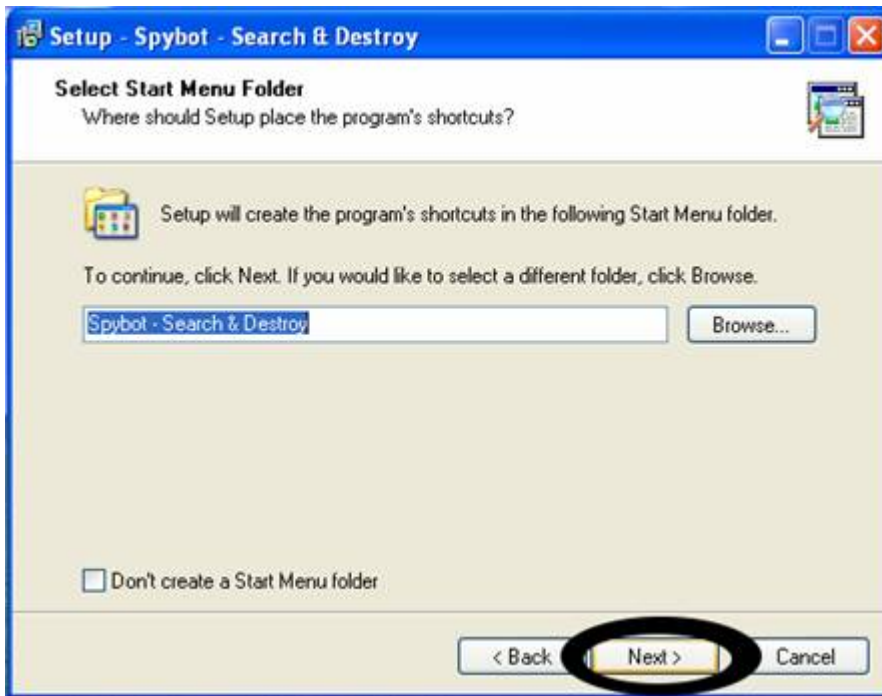
Click “Next” to continue.



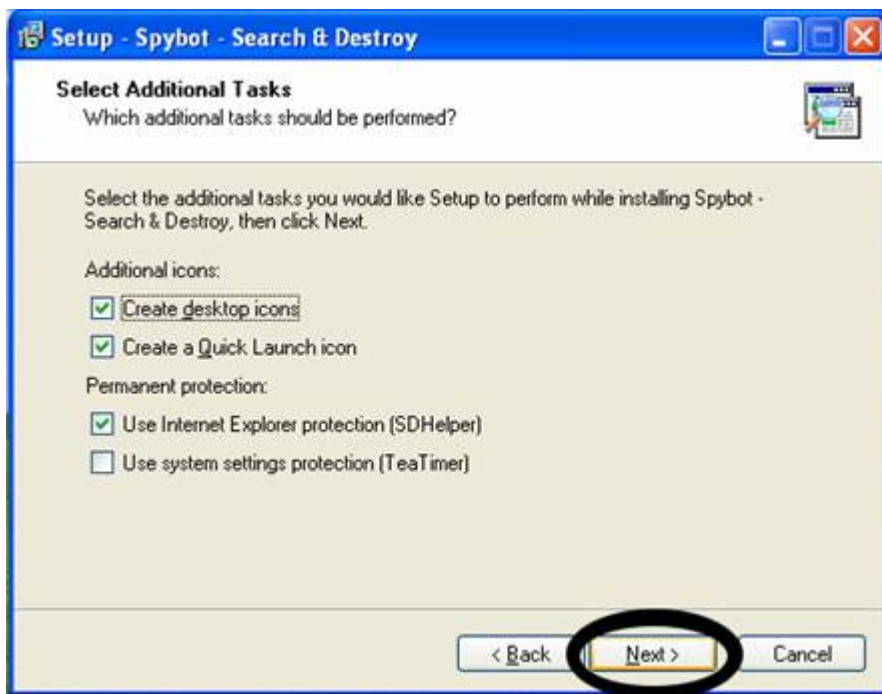
Click “Next” to continue.



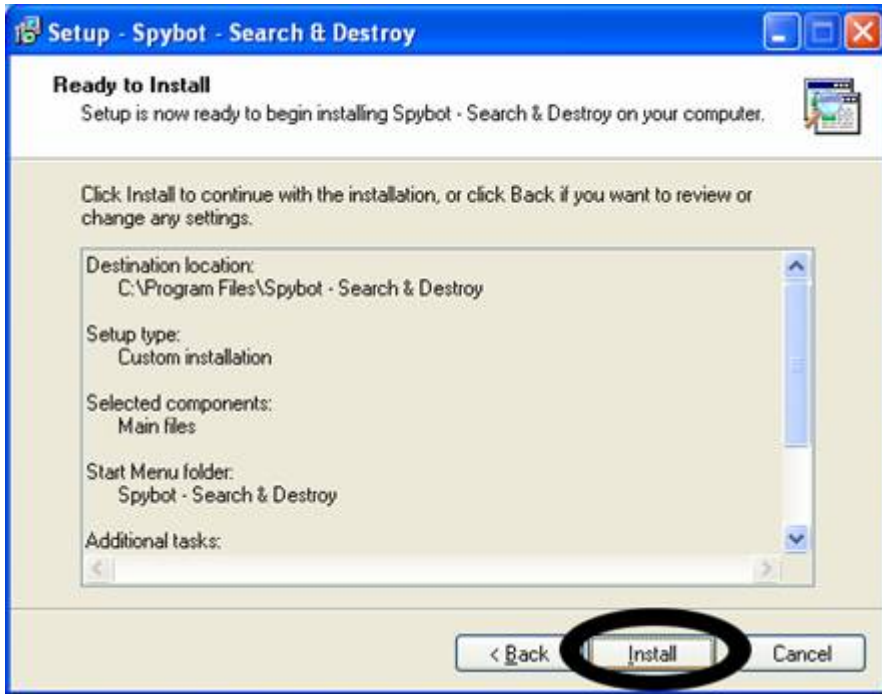
Click “Next” to continue.



Click "Next" to continue.



Click "Next" to continue.



Click “Install” to install the program



Click “Finish” to complete the installation.

Running SpyBot Search & Destroy after Installation:



Click on "Don't show this message again".



Click "OK" to continue.



Click “Create registry backup”, this is a safety option. After you click the button, it might take a few minutes to complete the registry backup.



Click “Next” to continue.



Click “Search for updates”, this is to find update the definitions for finding spyware/ad-ware.



Click “Download all available updates”, this will download all updates that are not already installed in the program.



Click “Next” to continue.



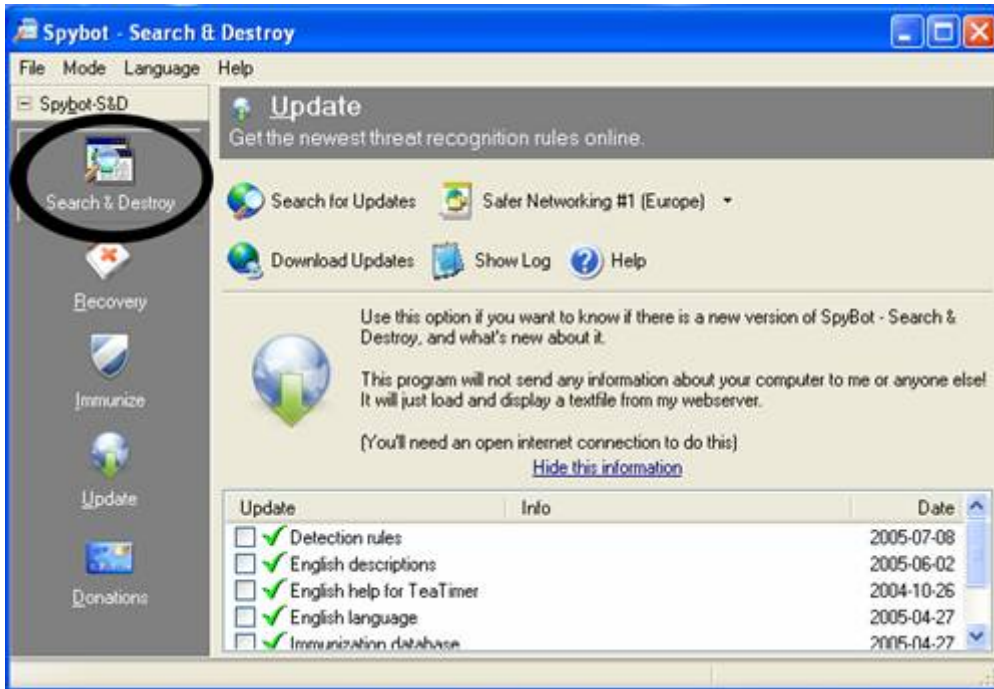
Click “Immunize this system”, this will install the updates that were downloaded.



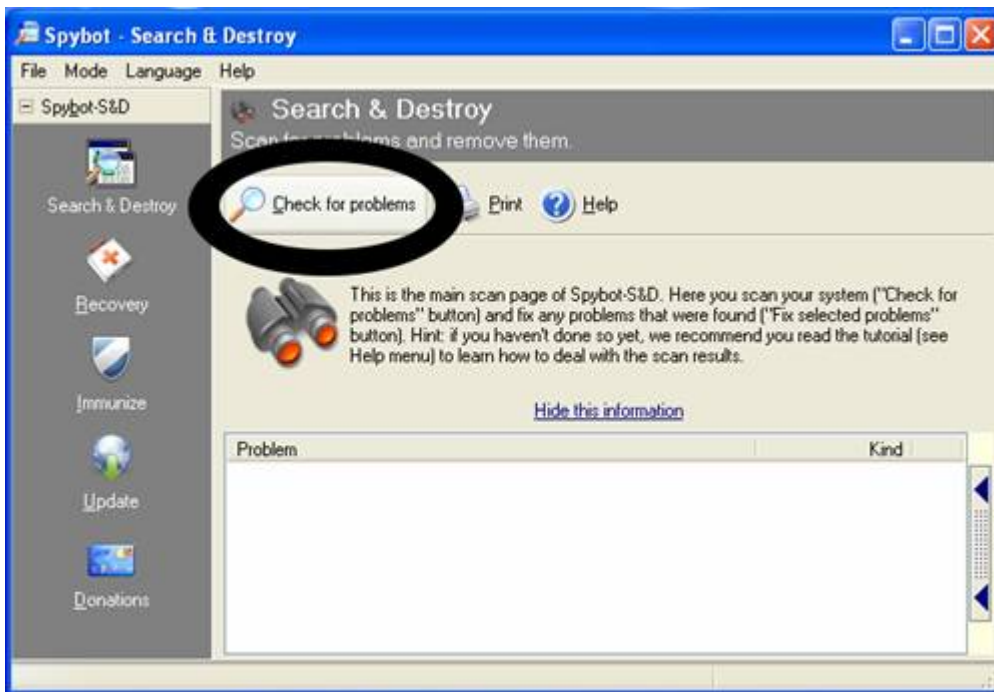
Click “Next” to continue.



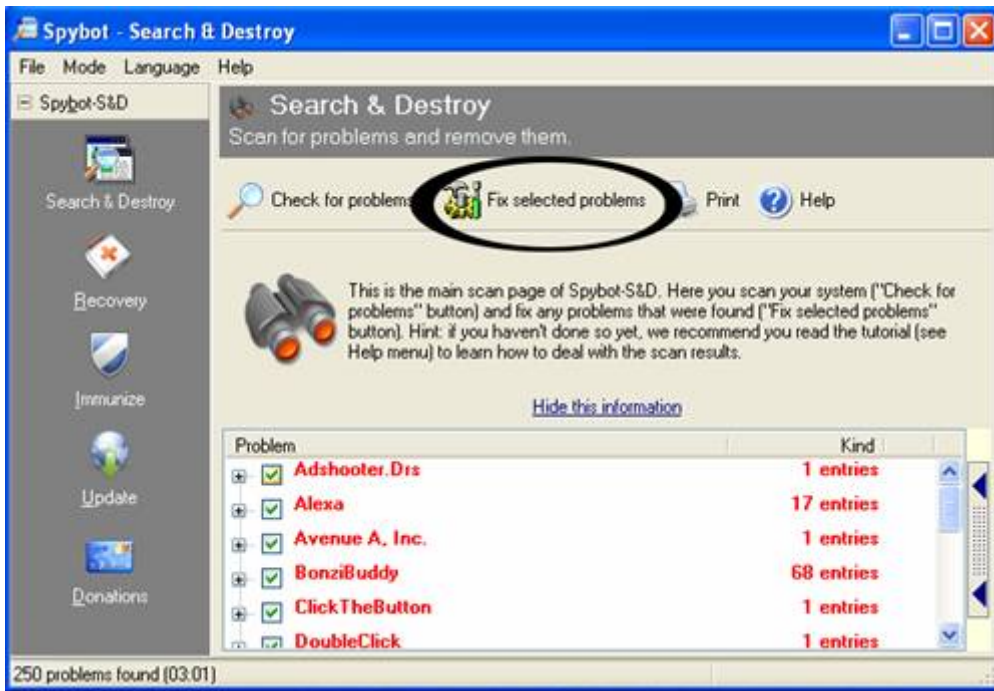
Click “Start using the program”, this will allow you to start using the program. You could also click “Read tutorial”, to read a tutorial on using this program, or click “Read help file”, to view the help file.



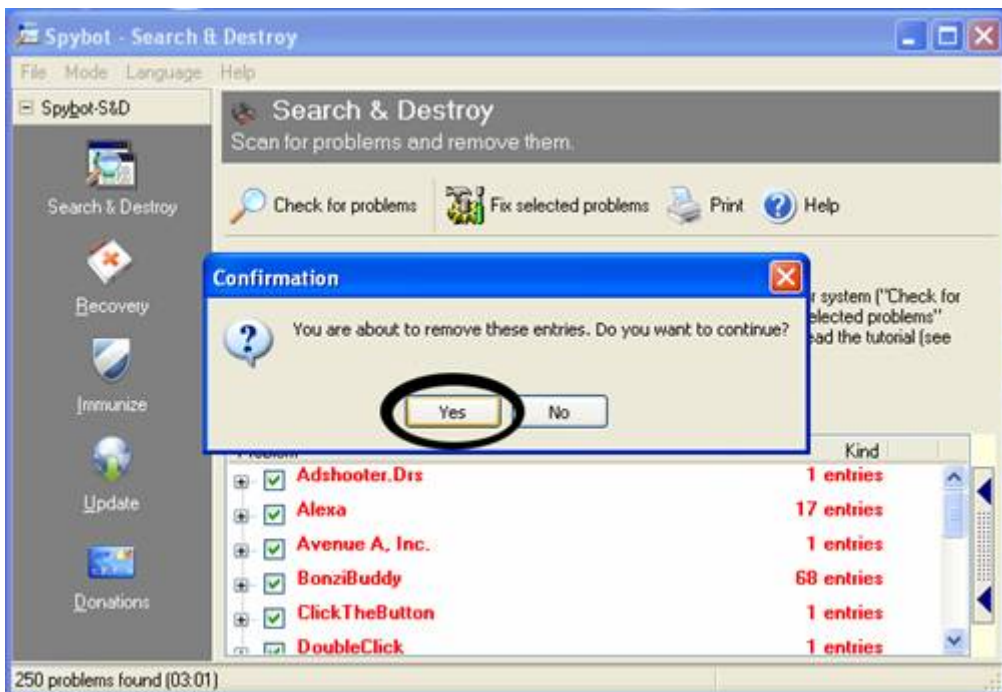
Click “Search & Destroy” to start a spyware/ad-ware scan.



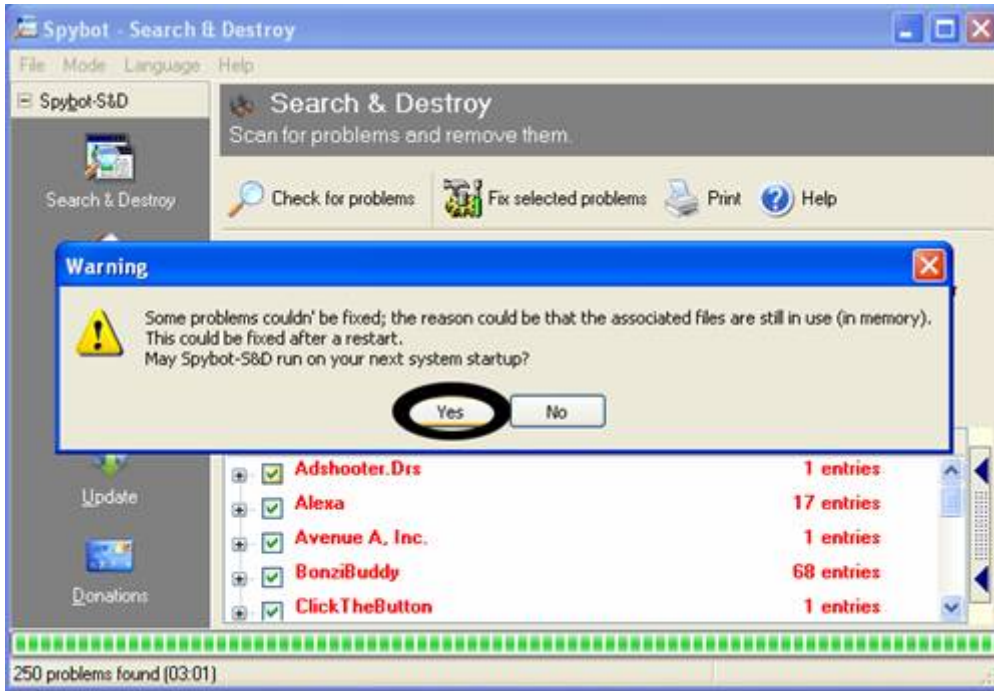
Click “Check for problems” to begin the scan.



If the scan returned problems, check all the boxes, then click “Fix selected problems” to remove the spyware/ad-ware that was found.



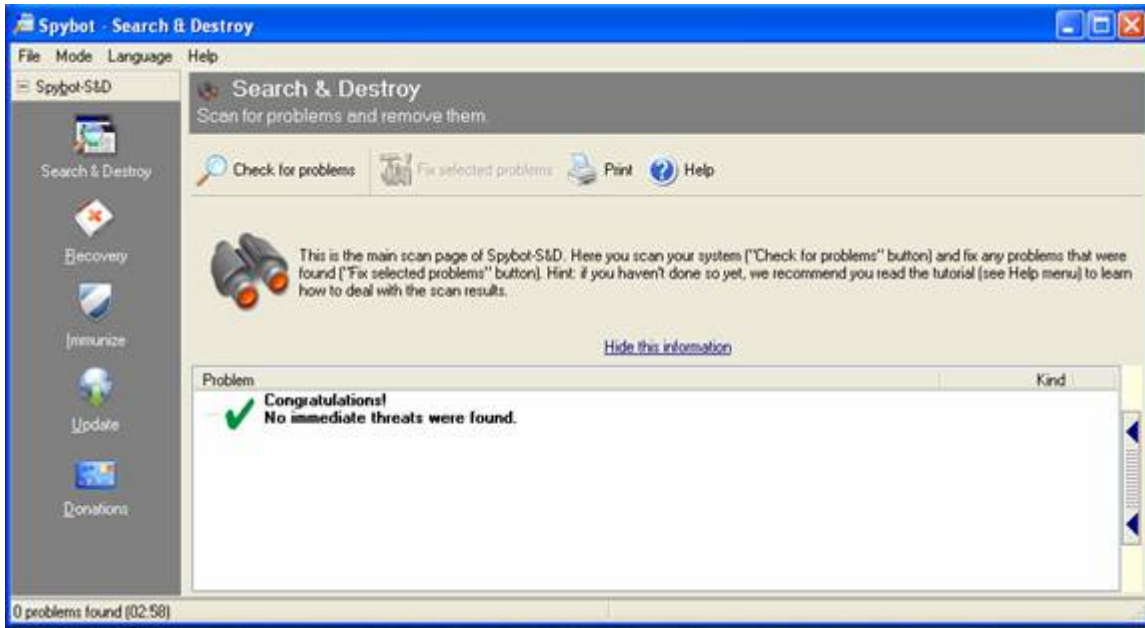
Click “Yes” to continue.



If some items could not be removed a new windows should appear like in Fig2-15, if not proceed to **Step 2-17**. Click “Yes”. The next time your computer starts up, SpyBot Search & Destroy will run automatically.

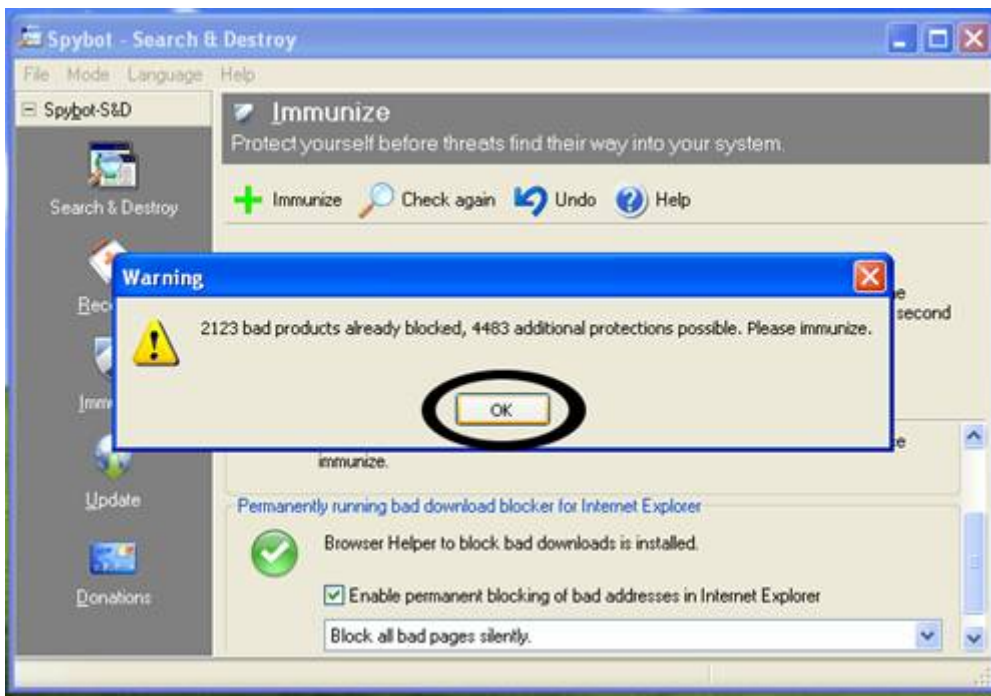


Click “OK”, it is recommended that you then restart your computer to allow SpyBot Search & Destroy to search for spyware/ad-ware at start up.

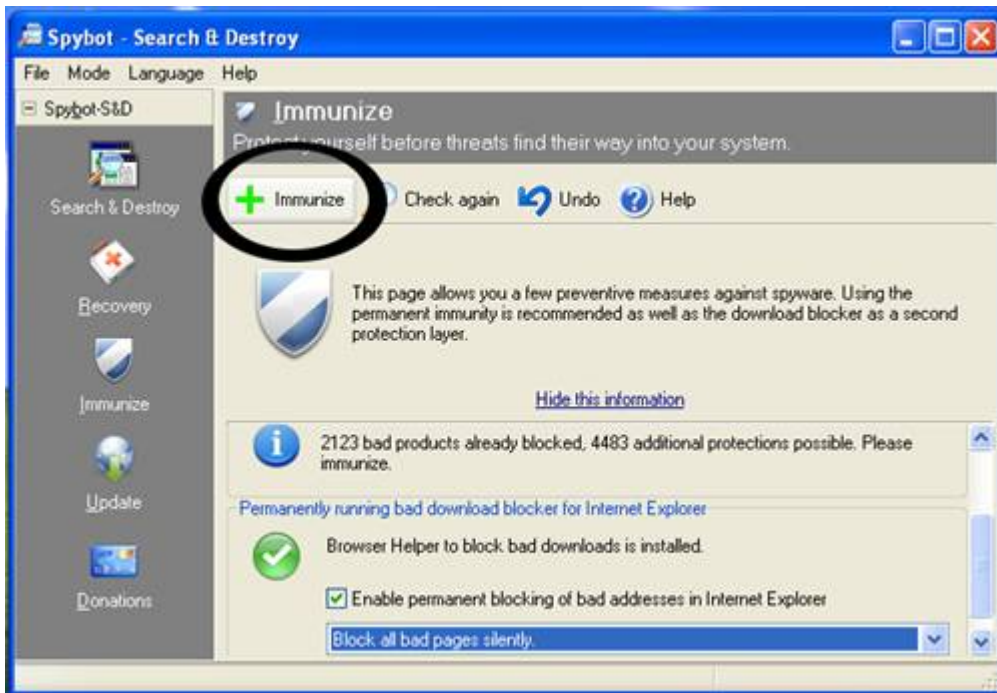


If the search returned no problems then SpyBot Search & Destroy could not find any spyware/ad-ware on your computer.

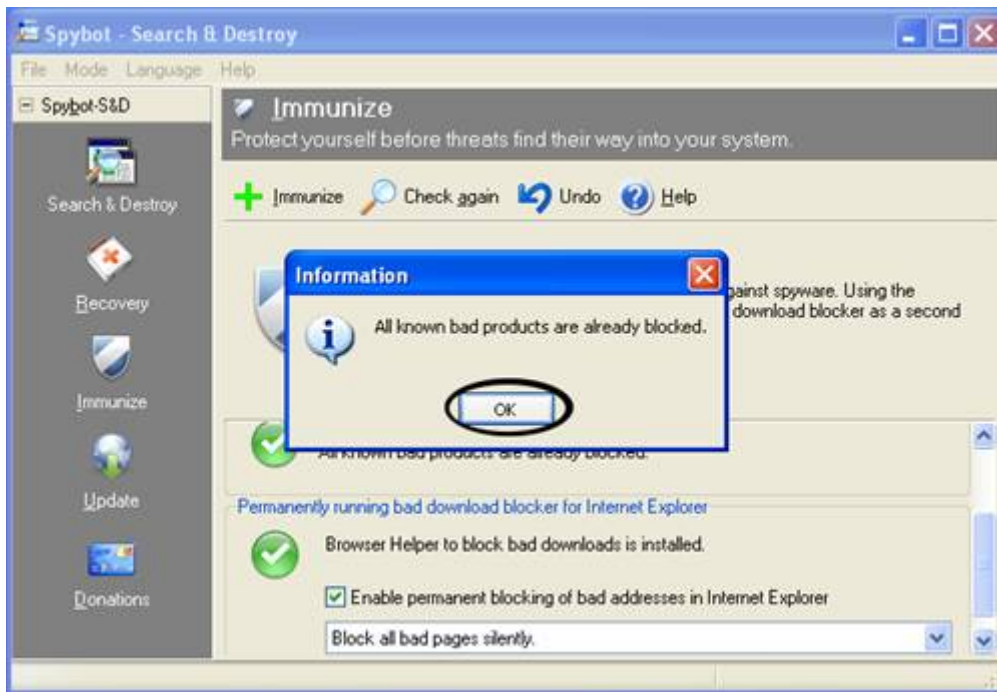
After each time you run Spybot, Please do the following
Click "Immunize" to go to the Immunize user interface.



Click OK
And then Click "Immunize".



Click "Check Again" to see if you installed all of the updates.



If you get a window like this, then you have successfully immunized your machine. Click "OK" to continue.