

ENGLISH 3313: British Romanticism

Romantic Outcasts

M/W/F 10:00am-10:50am

Dr. ALLISON DUSHANE

adushane@angelo.edu

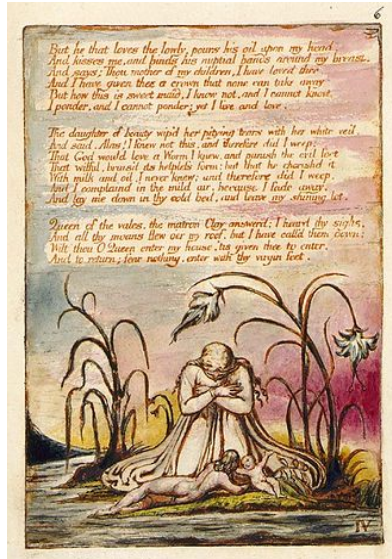
Office: Academic 019B

Office Hours

MWF

11:00am-12:00pm

Virtual Office Hours by Appointment



COURSE DESCRIPTION

Writing in the Romantic Era (roughly 1790-1832) is full of self-professed visionaries and prophets, including some writers who explicitly claim that the imagination wields a prophetic and transformative power. William Wordsworth claims that "with an eye made quiet by the power/ Of harmony, and the deep power of joy,/ We see into the life of things;" William Blake declares that "Nations are Destroy'd, or Flourish, in proportion as Their Poetry Painting and Music, are Destroy'd or Flourish!"; and P.B. Shelley announces in *A Defence of Poetry* that "poets are the unacknowledged legislators of the world." Why, and how, do these writers make such powerful assertions? How do the era's revolutions in politics, science, religion, and social justice intersect with concurrent revolutions in literary form? How does literature serve to draw attention to ideas and populations that might be considered "outcasts?"

REQUIRED BOOKS/ELECTRONIC TEXTS

We will be using online texts that work through a site called Perusall.com that allows you to annotate the texts, ask questions, and have conversations. **This means that you must purchase the online texts (not physical copies) to complete assignments.** I use these assignments instead of traditional reading quizzes, and find them to be more more encouraging of engaged reading (vs. reading for a quiz) and good class discussion. You may purchase codes from the bookstore, or buy the texts directly from Perusall.com.

- We will begin using *The Broadview Anthology of British Literature Volume 4: The Age of Romanticism* during the second week of class, and will be using it every week after that. There should be an option to "rent" (have access to the online text for 180 days) or "buy" (have permanent access) to this text.
- We will be reading Mary Shelley's *The Last Man* during the last three weeks of class.

GRADED COURSE WORK

Blackboard will calculate your final grade according to the following weighting system:

- 10% Preparation and Active Participation
- 30% Reading Responses
- 20% Perusall Assignments
- 30% Two Literary Analysis Essays
- 10% Final Course Reflection Essay

LEARNING OBJECTIVES FOR ENGLISH 3313

- Students will gain an awareness of the literature of the British Romantic period and practice techniques for literary interpretation and through readings, lectures, essays and in-class discussion.
- Students will develop their close reading skills through careful analysis of literature, informing their study through consideration of the culture in which such literature was created and the critical debates surrounding specific texts.
- Students will learn the discipline-specific terminology and writing conventions that will be expected of them as English majors and strengthen their writing abilities.
- Students will work closely with literary and critical texts in order to learn how to develop their own interpretations of literature and to engage with the work of professional scholars.

COURSE POLICIES

I. COURSE REQUIREMENTS

Method of Instruction

- **This class will meet in person.** If you are not able to regularly attend class in person you will not be able to complete this class and should see the EML Department Chair to request enrollment in a fully online section.
- Due dates for all assignments are listed on the weekly schedule on the syllabus and on Blackboard. You are responsible for planning your own schedule to meet assignment deadlines. Students should be proficient with Blackboard and must be able to access Blackboard on a regular basis. All assignments will be submitted through Blackboard and Perusall.com.
- In the interest of fairness to all students, I will only make exceptions to the attendance and late work policies in the syllabus if you contact Students Affairs (studentaffairs@angelo.edu) for an official excuse. Student Affairs will inform all of your professors of your situation so that you can get the accommodations you need. **This includes any COVID-related issue (suspected contact/illness, quarantine, etc.)**
 - If you are catastrophically ill, experiencing significant challenges due to a chronic illness, or have some other kind of emergency that would normally prevent you from attending class for more than a week, you should contact Student Affairs *and also let me know as soon as possible* so I can work with you.

Technology Requirements and Policies

- All assignments will be submitted via Blackboard and Perusall.com. You will need access to computer (not a phone) with reliable internet to complete and submit reading and writing assignments.
- All files uploaded to Blackboard must be in Microsoft Word or .pdf format. Remember, ASU students have free access to Microsoft Office.
- The latest version of an internet browser is recommended. Firefox and Chrome work well with Blackboard, and others, such as Safari, work less well.
- Internet connectivity problems and other personal computer issues will not be accepted as excuses for missing classwork or failing to submit assignments before the deadline.

Technical Support

The instructor is NOT qualified to provide technical support.

- If you have technology issues and/or questions, contact ASU tech support.
 - E-mail: elearning@angelo.edu
 - Phone: 325-942-2911 (24/7 helpline)
- Blackboard also has a website with guides to frequently asked student questions:
 - <https://help.blackboard.com/Learn/Student>

Communication

- You must use your ASU e-mail for official course communication.
- I will communicate with you through e-mail, Blackboard Announcements, and feedback on your written assignments. I check e-mail from 9-5 Monday-Friday and very rarely on the weekends. I will typically respond to e-mail within 24 hours.
- The deadlines for the course are set so that you have the option of completing assignments in the evenings, but I only check e-mail during the regular business hours specified above. I am happy to help you, but if you leave an assignment until the last minute, you will not get a response from me on Wednesday at 8:00pm or Thursday at 11:00pm.
- Students should be mindful of professional etiquette when sending e-mail.
 - I am better able to help you if you include the course you are referencing in your e-mail, a clear and concise question, and some idea of the resources you have already consulted (syllabus, course materials, Blackboard help guide) to try and answer your question.
 - Remember to always include a professional greeting in e-mails to professors! Professor Dushane, Dr. Dushane, and Dr. D all work for me.

Office Hours

- In-person office hours are posted on the syllabus, but also available virtually by appointment. I am very happy to meet with you if you have questions or need help! Please e-mail me at least 24 hours in advance and give me your availability so that we can schedule a time.

II. ACADEMIC HONESTY: ZERO TOLERANCE POLICY

All ASU students are expected to understand and to comply with the University's policies on [Academic Honesty](#) (link to Angelo State University's Honors Code and several links to resources on plagiarism and how to avoid it). Your enrollment this course assumes your agreement to this honor code, and your adherence to the policies contained in the Angelo State University Student Handbook: <https://www.angelo.edu/current-students/student-handbook/>

I have a zero tolerance policy for violations of the honor code, especially plagiarism. To be clear: submitting work that is not your own on ANY assignment, no matter how small, in addition to committing other acts of academic dishonesty as outlined in the code, is a violation punishable by your immediate failure for the *course*, not just the assignment.

III. STUDENTS WITH DISABILITIES

I am sympathetic to all disabilities and chronic illness, and request that all students requesting accommodation work through the student life office to make sure that they receive the attention they need.

- Please e-mail me early in the semester so we can discuss how I can make your accommodations work for this class! See “Other University Policies: Providing Accommodations for Students with Disabilities” below for more details.
- Students with disabilities that may warrant academic accommodations **must contact the Student Life Office** before the instructor can implement them. Room 112, Houston Harte University Center. E-mail:

IV. COUNSELING SERVICES

I encourage students struggling with events in their lives or ongoing mental health issues to seek out the allies and resources available to them on campus (links to campus offices included).

- [Campus Counseling Services](#): 325-942-2171
- [Campus Police](#): 325-942-2017
- Michelle Boone, [Title IX](#) Coordinator: 325-486-5367

V. ASSIGNMENTS: EXPECTATIONS and LATE POLICIES

Preparation and Active Participation/Attendance Policy

- At the end of the semester, I will assign an overall Preparation and Active Participation grade. Your grade in this category will depend on the following: coming to class on time and bringing the assigned text for the day, your willingness to participate in class discussion, and, most importantly, your overall level of engagement and attitude.
- I grant three absences to use in cases of illness, appointments, family issues, work conflicts, or circumstances that might prevent you from attending. You do not need to get my permission or give me proof of anything to use your absences. There is no distinction between excused/unexcused (unless you have an exception from Student Affairs—see below). In the interest of fairness, each student has the same amount of free absences, regardless of reason.
 - I allow *three* absences without question or penalty to your preparation and active participation grade.
 - Beginning with your *fourth* absence, your absences will affect your preparation and active participation grade.
 - After *six* absences, your total grade for preparation and active participation category will be a zero.
 - ***Nine or more absences is grounds for failure of the course.***
- If you miss a class, you will need to determine what you missed during your absence by checking the Blackboard announcements, asking your classmates or by seeing me during office hours. I post any lecture slides that I use on Blackboard (though I don't use slides during every class; many classes consist of discussion). Please do not e-mail me to ask: "what did I miss?" I am happy to answer clarifying questions, but it is your responsibility to check the schedule and stay on track!

- If you are experiencing major illness or another life event that will result in missing more than a couple of class meetings, please contact Students Affairs (studentaffairs@angelo.edu) so I can work with you on further accommodations. **This includes any COVID-related issue (suspected contact/illness, quarantine, etc.)**

Reading Responses

- Each week on the dates and times indicated on the syllabus, students will submit a Reading Response based on a selection of assigned prompts.
- Reading responses must be posted to the Blackboard Discussion Board. Reading responses will not be accepted by e-mail.
- **No late responses will be accepted for any reason, but *one* reading response grade will be dropped** before calculating the average for that category. Blackboard will automatically drop the lowest grade.

Perusall Assignments

- All readings will be completed on Perusall.com, which you can access through our Blackboard site. You will be completing weekly assignments that ask you to take notes on, highlight, and comment on the texts in conversation with other members of the class.
- These assignments are graded based on completion, but I also take the overall quality of your Perusall participation into account when assigning your Active Preparation and Participation grade.
- **No late responses will be accepted for any reason, but *one* Perusall assignment grade will be dropped** before calculating the average for that category. Blackboard will automatically drop the lowest grade.

Literary Analysis Essays

- Literary Analysis Essays must be turned in via Blackboard via the SafeAssign dropbox by the due date and time specified in the syllabus/on Blackboard announcements. Essays must be submitted as a Word document or .pdf format. If I cannot open the document via Blackboard, the essay will receive a 0. I will not accept essays in hard copy or via e-mail attachment.
- I will accept Literary Analysis Essays up to 1 week beyond their due date with a late penalty. See The Literary Analysis Essay assignment handout for details.

Final Exam: Course Reflection Essay

- The Course Reflection Essay will ask you to focus on the development of a central theme, issue, or question over time through a discussion of several course texts. The Course Reflection Essay is your Final Exam.
- The Course Reflection Essay must be submitted to the SafeAssign Dropbox in Blackboard as a Word document (.doc or .docx file) document or a PDF document (.pdf). Blackboard will not read other file types; if I can't open/read your file for any reason, the assignment will be counted as a zero. Be sure to confirm that your file has been submitted. I will not accept essays in hard copy or via e-mail attachment.
- Due to the limited time I have to submit final grades, there is only a 24 hour late window for this assignment. See the Final Course Reflection assignment handout for details.

OTHER UNIVERSITY POLICIES

[Link to Angelo State State University COVID-19 Policies and Updates](#)

<https://www.angelo.edu/covid-19/>

From [Operating Policy 10.5 \(Providing Accommodations for Students with Disabilities\)](#):

ASU is committed to the principle that no qualified individual with a disability shall, on the basis of disability, be excluded from participation in or be denied the benefits of the services, programs or activities of the university, or be subjected to discrimination by the university, as provided by the Americans with Disabilities Act of 1990 (ADA), the Americans with Disabilities Act Amendments of 2008 (ADAAA) and subsequent legislation.

Student Disability Services is located in the Office of Student Affairs, and is the designated campus department charged with the responsibility of reviewing and authorizing requests for reasonable accommodations based on a disability. It is the student's responsibility to initiate such a request by contacting an employee of the Office of Student Affairs, in the Houston Harte University Center, Room 112, or contacting the department via email at ADA@angelo.edu. For more information about the application process and requirements, visit the Student Disability Services website at www.angelo.edu/ADA

From [Operating Policy 10.19 \(Student Absence for Observance of Religious Holy Day\)](#):

A student who intends to observe a religious holy day should make that intention known in writing to the instructor prior to the absence. See ASU Operating Policy 10.19 Student Absence for [Observance of Religious Holy Day](#) for more information.

Incomplete Grade Policy

It is policy that incomplete grades be reserved for student illness or personal misfortune. Please contact faculty if you have serious illness or a personal misfortune that would keep you from completing course work. Documentation may be required. See ASU Operating Policy 10.11 [Grading Procedures](#) for more information.

Title IX at Angelo State University:

The University prohibits discrimination based on sex, which includes pregnancy, sexual orientation, gender identity, and other types of Sexual Misconduct. Sexual Misconduct is a broad term encompassing all forms of gender-based harassment or discrimination including: sexual assault, sex-based discrimination, sexual exploitation, sexual harassment, public indecency, interpersonal violence (domestic violence and/or dating violence), and stalking. As a faculty member, I am a Responsible Employee meaning that I am obligated by law and ASU policy to report any allegations I am notified of to the Office of Title IX Compliance.

Students are encouraged to report any incidents of sexual misconduct directly to ASU's Office of Title IX Compliance and the Director of Title IX Compliance/Title IX Coordinator at:

Michelle Boone, J.D.

Director of Title IX Compliance/Title IX Coordinator

Mayer Administration Building, Room 210

325-942-2022 / michelle.boone@angelo.edu

You may also file a report online 24/7 at www.angelo.edu/incident-form.

If you are wishing to speak to someone about an incident in confidence you may contact the *University Health Clinic and Counseling Center* at 325-942-2173 or the *ASU Crisis Helpline* at 325-486-6345.

For more information about Title IX in general you may visit www.angelo.edu/title-ix.

WEEKLY SCHEDULE*

*See Blackboard for more detailed reading assignments and weekly updates. Weeks One and Two give a detailed breakdown of Monday/Wednesday/Friday meetings; daily breakdowns of subsequent weeks will be posted on Blackboard.

Week # and Dates	Readings (R), Lectures (L), and Handouts (H)	Assignments Due
Week One: 1.17-1.21	Monday: No Class/MLK Wednesday: Lecture and Class Orientation H: Syllabus H: Reading Response Assignments L: <i>What is Romanticism?</i> Friday: Reading Response and Perusall Assignment Discussion R: (in Perusall—see directions on Blackboard announcements) William Blake, <i>The Book of Thel</i> L: <i>What is Romanticism?</i>	Due Thursday @ 11: 59pm <input type="checkbox"/> Perusall Assignment #1 <input type="checkbox"/> Reading Response Assignment #1
Week Two: 1.24-1.28	Monday: Lecture R: from Lyrical Ballads 1798 L: William Wordsworth and Samuel Taylor Coleridge, <i>Lyrical Ballads</i> Wednesday: Perusall Assignment Discussion R: from Preface to Lyrical Ballads, 1800 and 1802 Friday: Reading Response Discussion R: Wordsworth, “Lines Written a Few Miles Above Tintern Abbey”	Due Tuesday @ 11:59pm <input type="checkbox"/> PA #2 Due Thursday @ 11:59pm <input type="checkbox"/> RR #2
Week Three: 1.31-2.4	Samuel Taylor Coleridge and the Sublime	Due Tuesday @ 11:59pm <input type="checkbox"/> PA #3 Due Thursday @ 11:59pm <input type="checkbox"/> RR #3
Week Four 2.7-2.11	Dorothy Wordsworth and Women in the Romantic Era	Due Tuesday @ 11:59pm <input type="checkbox"/> PA #4 Due Thursday @ 11:59pm <input type="checkbox"/> RR #4
Week Five 2.14-2.18	William Blake and Romantic Organicism	Due Tuesday @ 11:59pm <input type="checkbox"/> PA #5 Due Thursday @ 11:59pm <input type="checkbox"/> RR #5

Week Six 2.21-2.25	Anna Laetitia Barbauld and the French Revolution	Due Tuesday @ 11:59pm <input type="checkbox"/> PA #6 Due Thursday @ 11:59pm <input type="checkbox"/> RR #6
Week Seven 2.28-3.4	Literary Analysis Essay #1 *ASU Writer's Conference Thurs/Fri	Due Tuesday @ 11:59pm <input type="checkbox"/> RR #7: Essay #1 Prompt Response Due Sunday @ 11: 59pm <input type="checkbox"/> Literary Analysis Essay #1
Week Eight 3.7-3.11 *Spring Break 3.14-3.18	The Slave Trade and the Romantic Abolition Movement	Due Tuesday @ 11:59pm <input type="checkbox"/> PA #7 Due Thursday @ 11:59pm <input type="checkbox"/> RR #8
Week Nine 3.21-3.25	Second Generation Romanticism: Poetry and Social Movements	Due Tuesday @ 11:59pm <input type="checkbox"/> PA #8 Due Thursday @ 11:59pm <input type="checkbox"/> RR #9
Week Ten 3.28-4.1	Second Generation Romanticism: Poetry and Social Movements	Due Tuesday @ 11:59pm <input type="checkbox"/> PA #9 Due Thursday @ 11:59pm <input type="checkbox"/> RR #10
Week Eleven 4.4-4.8	John Keats and Romantic-Era Science	Due Tuesday @ 11:59pm <input type="checkbox"/> PA #10 Due Thursday @ 11:59pm <input type="checkbox"/> RR #11
Week Twelve Essay #2 4.11-4.15	Literary Analysis Essay #2	Due Tuesday @ 11:59pm <input type="checkbox"/> RR #12: Essay #2 Prompt Response Due Sunday @ 11: 59pm <input type="checkbox"/> Literary Analysis Essay #2

Week Thirteen 4.18-4.22	Mary Shelley, <i>The Last Man</i>	Due Tuesday @ 11:59pm <input type="checkbox"/> PA #11 Due Thursday @ 11:59pm <input type="checkbox"/> RR #13
Week Fourteen 4.25-4.29	Mary Shelley, <i>The Last Man</i>	Due Tuesday @ 11:59pm <input type="checkbox"/> PA #12 Due Thursday @ 11:59pm RR #14
Week Fifteen 5.2-5.6	Mary Shelley, <i>The Last Man</i> Course Reflection Assignment	Due Tuesday @ 11:59pm <input type="checkbox"/> PA #13 No Assignments Due Thursday: Work on Course Reflection Essay
Final Exam Week 5.9-5.13	Course Reflection Essay Due: Monday, May 9th @ 11:59pm	