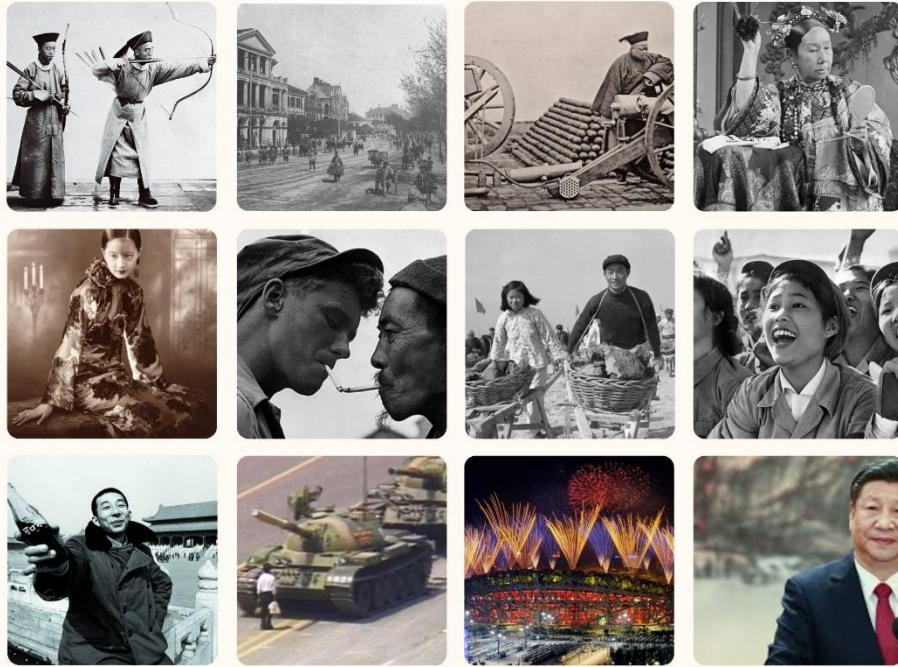


HIST 3372
Modern China
Summer Session II, 2022



Instructor: Dr. Laurie Dickmeyer

Email: laurie.dickmeyer@angelo.edu

Phone: 325-942-2325

Office: Academic 210 G

Office Hours: Monday-Friday, 1-2 pm & by appointment

- **In-person:** Academic 210 G
- **Video Conferencing/Chat:** Blackboard Collaborate
- **Phone:** 325-942-2325

Course Information

Welcome!

Welcome to “Modern China”! I am very excited to work with you this term, and I look forward to hearing your ideas and the different perspectives you will bring. If you have any questions, concerns, or just want to share something with me, please get in touch. –Dr. Dickmeyer

Course Format

This course is online asynchronous, meaning that there are no “live” elements to the course. All work is to be completed during Summer Session 2 (July 11-August 12)

Course Description

A survey of modern China from 1644 to the present. The course will explore the changes in the relationship between state and society from the founding of the Qing dynasty to the People’s Republic of China (PRC). Themes will include imperialism, nationalism, ethnicity, gender, and revolution.

Although the main goal of this course is to learn about China’s modern history, we will also focus on several core historical skills:

- Primary source analysis
- Reading scholarly secondary sources
- Locating relevant and reputable sources of information
- Clear, persuasive writing

Course Credits

3 credits

Prerequisite and Co-requisite Courses

None

Prerequisite Skills

Accessing Internet websites, using ASU Library resources, opening PDF files, and proficiency with Microsoft Word are expectations of this course.

Program Outcomes

During the course of the program of study for a degree in History, the graduate will:

1. Develop a fundamental knowledge and an understanding of historical events
2. Recognize political, economic and social causation in history and the effects that historical forces have on humankind
3. Appreciate cultural achievements of different civilizations, whether American, Latin American, Asian or European
4. Hone skills in research, writing, reading, oral communication and critical thinking
5. Engage in active learning through personal inquiry and problem solving
6. Gain usable specialized vocabulary needed for careers in history-related fields

7. Acquire bibliographical expertise and familiarity with historiography

Student Learning Outcomes

By completing all course requirements, students will be able to:

- Identify and describe the major trends of Chinese history from 1644 to present
- Explain how class, race, ethnicity, and gender affected individual experiences
- Contextualize, analyze, and critique the thoughts and actions of historical actors
- Evaluate and synthesize information from disparate sources
- Analyze secondary sources for argument and content

Required Texts and Materials

All readings will be available as PDFs or links to websites on the Blackboard website.

Technology Requirements

To successfully complete this course, students need to have access to a computer to read emails and course announcements, access Youtube videos, open and read PDF files, and use a Word processor to compose assignments.

To participate in one of ASU's distance education programs, you need this technology:

- A computer capable of running Windows 7 or later, or Mac OSX 10.8 or later
- The latest version of one of these web browsers: internet Explorer, Firefox, or Safari
- Microsoft Office Suite or a compatible Open Office Suite
- Adobe Acrobat Reader
- High Speed Internet Access
- Ethernet adapter cable required (wireless connections can drop during tests and Collaborate sessions)

Refer to Angelo State University's Distance Education website for further technology requirements: [Angelo State University's Distance Education Website](#)

Communication

I will respond to email and/or telephone messages within 24 hours during working hours Monday through Friday. Weekend messages may not be returned until Monday.

Written communication via email: All private communication will be done exclusively through your ASU email address. Check frequently for announcements and policy changes. In your emails to faculty, include the course name and section number in your subject line.

In-person office hours: Please see the time and place at the top of this document.

Virtual communication: Office hours and/or advising may be done via telephone (325-942-2325) or Blackboard Collaborate. Please see information about office hours at the top of this document.

Grading

Evaluation and Grades

Course grades will be determined as indicated in the table below.

Assessment	Percent/Points of Total Grade
Weekly Homework Assignments (journal entries, quizzes, discussion board posts, etc.)	55%
Mini-Project	20%
Midterm exam	10%
Final exam	15%
TOTAL	100%

Grading System

Course grades will be dependent upon completing course requirements and meeting the student learning outcomes.

The following grading scale is in use for this course:

A = 89.5-100%

B = 79.5-89.4%

C = 69.5-79.4%

D = 59.5-69.4%

F = 0-59.4%

Please see the “Weighted Total” column on Blackboard for your updated grade in this course.

Teaching Strategies

This course is conducted completely online asynchronously, meaning that students complete the week’s assignments at their own pace and on their own schedule within a given week. There will not be any required course meetings.

You are expected to check the Blackboard course and your ASU email regularly for updates, new course content, and feedback for the duration of the course.

If you have questions, please feel free to email those to the instructor at laurie.dickmeyer@angelo.edu.

Assignment and Activity Descriptions

***Please note: Additional instructions and rubrics for all assignments and activities will be posted to Blackboard.**

Weekly Assignments (55%): Each week you will have content such as recorded lectures and readings to review. Quizzes, journal entries, and/or discussion board posts will be the primary means of assessing your engagement with these materials each week.

Midterm Exam (10%): There will be a midterm exam covering content from the first two weeks of the course. Expect short responses and essay questions. A study guide will be updated weekly with key terms and possible questions. This is a “take-home” exam and will not be timed.

Final Exam (15%): There will be a final exam covering content from the second half of the course. Expect short responses and essay questions. A study guide will be updated weekly with key terms and possible questions. This is a “take-home” exam and will not be timed.

Mini-Project (20%): During Week 4, you will submit a mini-project that will allow you to delve into Chinese history, culture, and/or current events in more depth. For this assignment, you have several options. Choose ONE. Additional instructions and rubrics will be available on the course website.

- Option #1: Essay on *To Live* (1994)
- Option #2: Current Event Report

Assignment Submission

All assignments must be submitted through the Blackboard website. This is for grading, documenting, and archiving purposes.

Issues with technology use arise from time to time. If a technology issue does occur regarding an assignment submission, email me at laurie.dickmeyer@angelo.edu and attach a copy of what you are trying to submit. This lets me know you completed the assignment on time and are just having problems with the online submission feature in Blackboard. Then please contact the **IT Service Center at (325) 942-2911** or go to your Technology Support tab to report the issue. Once the problem is resolved, submit your assignment through the appropriate link. This

process will document the problem and establish a timeline. Be sure to keep a backup of all work.

Late Work or Missed Assignments Policy

All due dates are posted on this syllabus and any revisions to this schedule will be announced via email and Blackboard.

If you believe you will be unable to complete an assignment on time, please email me, and we can arrange for an extension.

Note: I want to emphasize that I realize that you all have lives outside of this class. I hope that you will feel comfortable coming to me if you need accommodations.

Course Schedule

Note: Additional materials including primary source readings and lecture videos will be included in weekly materials.

Week 1 (due July 15) - Course Orientation; The Qing Dynasty (1644-1911)

Reading

- Harold Tanner, "A Manchu Empire" and "The Qing Dynasty's 19th-Century Crises," *China: A History* (78 pp.)
- Selected primary sources

Weekly Assessments (15 points total)

- Self-Introduction (3 points)
- Journal Entry - What do you know about Modern China? Impressions? (3 points)
- Map Quiz (3 points)
- Lecture and Reading Quiz (3 points)
- Journal Entry/Discussion Board Post (3 points)

Week 2 (due July 22) - The Early Republican Era (1911-1937)

Reading

- Zheng Yanwen, "The Age of Revolution," in *Ten Lessons in Modern Chinese History* (pp. 106-130)
- Selected primary sources

Weekly Assessments (10 points total)

- Lecture and Reading Quiz (5 points)
- Journal Entry/Discussion Post (5 points)

Midterm Exam (10 points)

Week 3 (due July 29) - The War Years (1937-1949)

Reading

- Rana Mitter, "The War Years, 1937-1949," in *The Oxford Illustrated History of Modern China*, pp. 150-175
- Selected primary sources

Weekly Assessments (10 points total)

- Lecture and Reading Quiz (5 points)
- Journal Entry/Discussion Post (5 points)

Work on Mini-Project

Week 4 (due August 5) - The Mao Years (1949-1976)

Reading

- Timothy Cheek, *Mao Zedong and China's Revolutions*, "Introduction" (pp. 1-36)
- *To Live* (1994)
- "Cultural Revolution Readings – 1960s," *Mao Zedong and China's Revolutions* (pp. 169-179)
- Rae Yang, "At the Center of the Storm (1997)," *Mao Zedong and China's Revolutions* (pp. 210-215)

Weekly Assessments (10 points total)

- Lecture and Reading Quiz (5 points)
- Journal Entry/Discussion Post (5 points)

Mini Project (20 points)

Week 5 (due August 12) – Reform-Era China (1976-present)

Reading

- R. Keith Schoppa, Ch. 11 and 12, *Twentieth Century China: A History in Documents* (pp. 151-179)
- Yu Hua, "The People," in *China in Ten Words* (pp. 3-14)+
- Jeff Wasserstrom and Maura Cunningham, "US-China Misunderstandings" and "The Future," *China in the 21st Century—What Everyone Needs to Know* (pp. 119-158)

Weekly Assessments (10 points total)

- Lecture and Reading Quiz (5 points)
- Journal Entry/Discussion Post (5 points)

Final Exam (15 points)

General Policies Related to This Course

All students are required to follow the policies and procedures presented in these documents:

- [Angelo State University Student Handbook](#)¹
- [Angelo State University Catalog](#)²

History Department Statement on Plagiarism & Academic Honesty

Plagiarism is a serious topic covered in ASU's Academic Integrity policy in the [Student Handbook](#). Plagiarism is utilizing someone else's writings, ideas, or works without providing due credit or proper citation. Plagiarism is literary theft. Quotation marks and, if instructed by me or in the assignment criteria, footnote/endnote citations should be utilized in order to note the source of a work or idea. If you are unsure about a citation, contact me with your question or visit [this helpful website](#) to avoid common plagiarism pitfalls. *There is no excuse for plagiarism.* It is your responsibility to plan your semester and time effectively to avoid putting yourself in a situation where you might turn to plagiarism. A digital plagiarism detection program (e.g. SafeAssign or Turn-it-in) will be used to check your work. Be intentional about submitting original work, complete with proper citations.

Academic misconduct is not limited to plagiarism. Academic dishonesty might also include copying somebody else's work, submitting somebody else's work as your own, failing to cite sources, or signing another student into class. Although discussing your work with classmates may be helpful, you must also be aware of "unauthorized collaboration" as a form of academic misconduct.

The History Department's policy is that violations of the academic honor code will result in a 0 on an assignment for the first offense and a 0 in the entire class for subsequent offenses. In-class forms of plagiarism, such as signing in for another student, will be considered on a case by case basis, and I reserve the right to fail violators from this course on their first violation in egregious cases of misconduct. All academic integrity violations will be referred to the Executive Director of Student Affairs, who may impose additional sanctions if warranted as outlined in the [Code of Student Conduct](#). Once a student has been notified of an academic integrity allegation, the student may not drop the course until the academic integrity processes are complete. If a student drops or withdraws, the student will be reinstated to the course.

Accommodations for Students with Disabilities

ASU is committed to the principle that no qualified individual with a disability shall, on the basis of disability, be excluded from participation in or be denied the benefits of the services, programs or activities of the university, or be subjected to discrimination by the university, as provided by the Americans with Disabilities Act of 1990 (ADA), the Americans with Disabilities Act Amendments of 2008 (ADAAA) and subsequent legislation.

¹ <https://www.angelo.edu/student-handbook/>

² <https://www.angelo.edu/catalogs/>

Student Disability Services is located in the Office of Student Affairs, and is the designated campus department charged with the responsibility of reviewing and authorizing requests for reasonable accommodations based on a disability. It is the student's responsibility to initiate such a request by contacting an employee of the Office of Student Affairs, in the Houston Harte University Center, Room 112, or contacting the department via email at ADA@angelo.edu. For more information about the application process and requirements, visit the [Student Disability Services website](#).³ The employee charged with the responsibility of reviewing and authorizing accommodation requests is:

Dallas Swafford
Director of Student Disability Services
Office of Student Affairs
325-942-2047
dallas.swafford@angelo.edu
Houston Harte University Center, Room 112

Incomplete Grade Policy

It is policy that incomplete grades be reserved for student illness or personal misfortune. Please contact faculty if you have serious illness or a personal misfortune that would keep you from completing course work. Documentation may be required. See ASU Operating Policy 10.11 [Grading Procedures](#)⁴ for more information.

Student Absence for Observance of Religious Holy Days

A student who intends to observe a religious holy day should make that intention known in writing to the instructor prior to the absence. See ASU Operating Policy 10.19 Student Absence for [Observance of Religious Holy Day](#)⁵ for more information.

Copyright Policy

Students officially enrolled in this course should make only one printed copy of the given articles and/or chapters. You are expressly prohibited from distributing or reproducing any portion of course readings in printed or electronic form without written permission from the copyright holders or publishers.

Syllabus Changes

The faculty member reserves the option to make changes as necessary to this syllabus and the course content. If changes become necessary during this course, the faculty will notify students of such changes by email and/or course announcements. It is the student's responsibility to look for such communications about the course on a daily basis.

³ <https://www.angelo.edu/services/disability-services/>

⁴ <https://www.angelo.edu/content/files/14197-op-1011-grading-procedures>

⁵ <https://www.angelo.edu/content/files/14206-op-1019-student-absence-for-observance-of>

Title IX at Angelo State University

Angelo State University is committed to providing and strengthening an educational, working, and living environment where students, faculty, staff, and visitors are free from sex discrimination of any kind. The University prohibits discrimination based on sex, which includes pregnancy, sexual orientation, gender identity, and other types of Sexual Misconduct. Sexual Misconduct is a broad term encompassing all forms of gender-based harassment or discrimination including: sexual assault, sex-based discrimination, sexual exploitation, sexual harassment, public indecency, interpersonal violence (domestic violence and/or dating violence), and stalking. As a faculty member, I am a Responsible Employee meaning that I am obligated by law and ASU policy to report any allegations I am notified of to the Office of Title IX Compliance. This is done in order to connect students with resources and options in addressing the allegations reported. As a student, are encouraged to report any incidents of sexual misconduct directly to ASU's Office of Title IX Compliance and the Title IX Coordinator. You may do so by contacting:

Michelle Miller, J.D.

Title IX Coordinator

Mayer Administration Building, Room 210

325-942-2022

michelle.miller@angelo.edu

You may also file a report online 24/7 at www.angelo.edu/incident-form.

If you are wishing to speak to someone about an incident in confidence you may contact the University Health Clinic at 325-942-2171, Counseling Services at 325-942-2371 or the ASU Crisis Helpline at 325-486-6345. The Office of Title IX Compliance also provides accommodations related to pregnancy (such as communicating with your professors regarding medically necessary absences, modifications required because of pregnancy, etc.). If you are pregnant and need assistance or accommodations, please contact the Office of Title IX Compliance utilizing the information above.

For more information about Title IX in general you may visit www.angelo.edu/title-ix.

Grading Rubrics

Grading Rubrics will be made available on the Blackboard website.

Student Evaluation of Faculty and Course

Students in all programs are given the opportunity to evaluate their courses and the faculty who teach them. Evaluations are most helpful when they are honest, fair, constructive, and pertinent to the class, clinical experience, or course. Faculty value student evaluations, and use student suggestions in making modifications in courses, labs and clinical experiences.

Angelo State University uses the IDEA (Individual Development and Educational Assessment) system administered through Kansas State University for all course evaluations. The Office of Institutional Research and Assessment administers IDEA for the entire university, online and has established a policy whereby students can complete course evaluations free from coercion.

The evaluation for this course will be weighted to evaluate the success in acquiring the following skills:

1. Gaining a basic understanding of the subject (e.g., factual knowledge, methods, principles, generalizations, theories)
2. Developing knowledge and understanding of diverse perspectives, global awareness, or other cultures

End of Syllabus!